

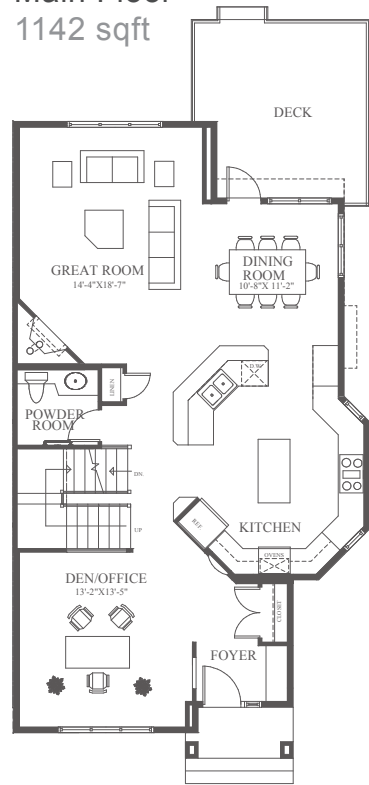


**Winterfell**  
*Development Corp.*

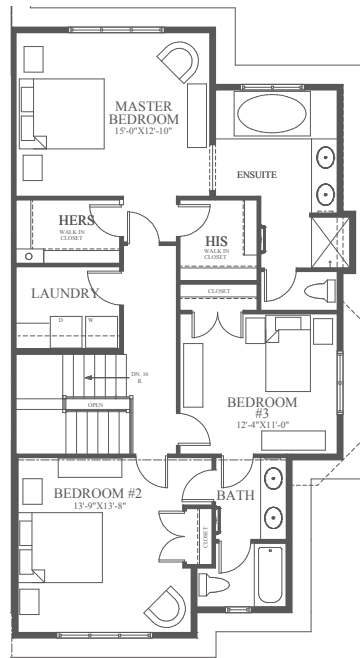


4644 81 St NW

**Main Floor**  
1142 sqft



**Upper Floor**  
1136 sqft



2278 sqft - Semi detached Two-Storey  
3 Beds, 2.5 Baths, Den

Winterfell Development Corp.  
#202 4712 - 16 Ave NW  
Calgary, AB T3B 0N1  
T 403.288.8088  
Email: [info@winterfell.ca](mailto:info@winterfell.ca)  
[www.winterfell.ca](http://www.winterfell.ca)

