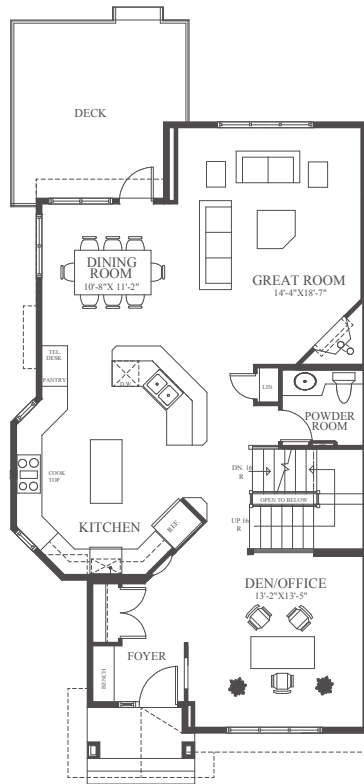


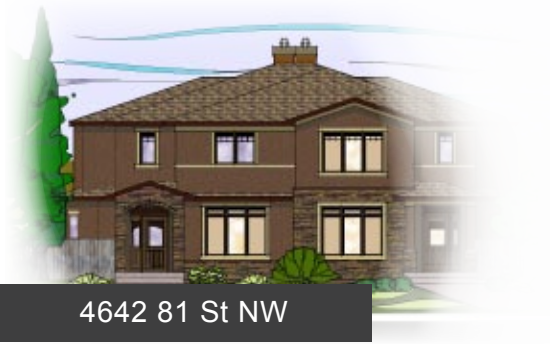
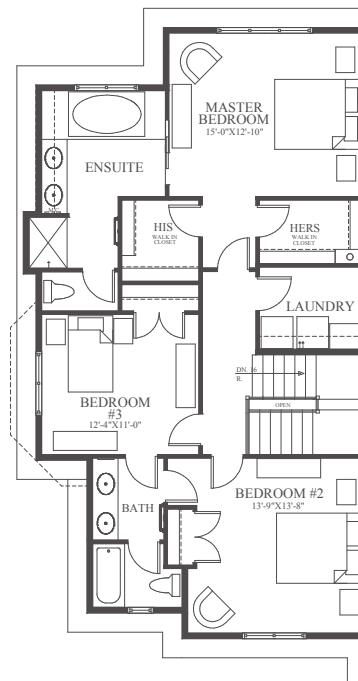


Winterfell
Development Corp.

Main Floor
1142 sqft



Upper Floor
1136 sqft



4642 81 St NW

2278 sqft - Semi detached Two-Storey
3 Beds, 2.5 Baths, Den

Winterfell Development Corp.
#202 4712 - 16 Ave NW
Calgary, AB T3B 0N1
T 403.288.8088
Email: info@winterfell.ca
www.winterfell.ca

