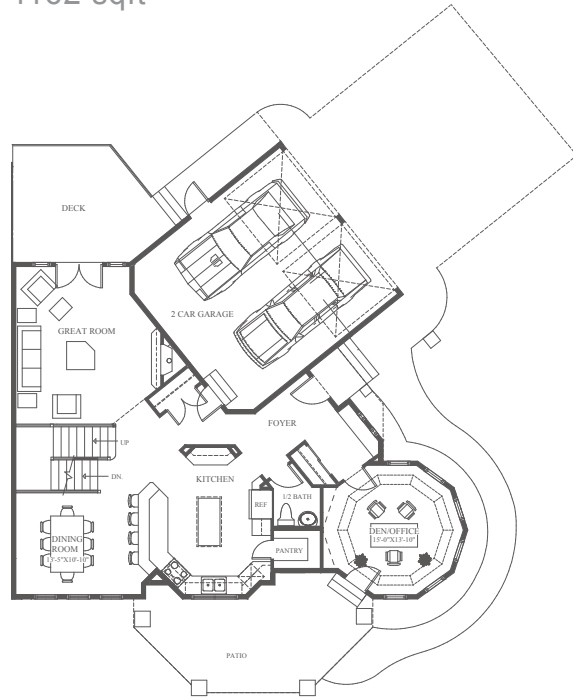


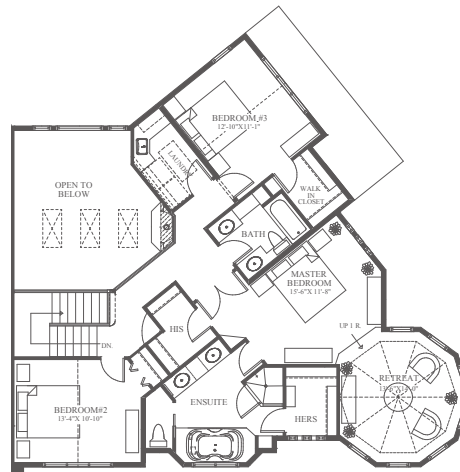


2004 'a' Home Road NW

Main Floor
1162 sqft



Upper Floor
1294 sqft



2456 sqft - Semi detached Two-Storey
2-car Garage, 3 Beds, 2.5 Baths, Den

Winterfell Development Corp.
#202 4712 - 16 Ave NW
Calgary, AB T3B 0N1
T 403.288.8088
Email: info@winterfell.ca
www.winterfell.ca

